

P R E S E N T I N G

A GATEWAY TO ULTRA LUXE LIFESTYLE
IN THE SPIRITUAL CITY OF INDA, VRINDAVAN
HAS ARRIVED



A CORPORATE VENTURE BY
AMAIRA GROUP





❖ *Radhe Radhe* ❖

LIVE IN THE EPICENTER
OF
SPIRITUALITY





BHOOMI G A T E W A Y

Spread across an expansive landscape, this ultra-luxury township redefines elite lifestyle experiences in the heart of vrindavan.



STUDIO &
1/2/3 & 4 BHK



HIGH-RISE
TOWER (G+30)

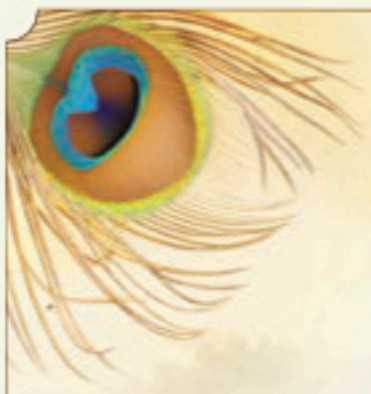


APPROX. 2
ACRES



RAMTAL CHOWK
VRINDAVAN





Discover

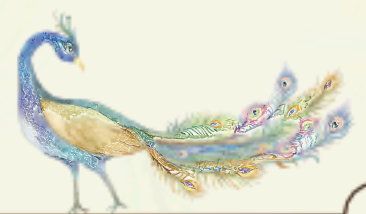
THE MOST BLISSFUL RESIDENCES OF VRINDAVAN



Where your Lifestyle
well-being meets
Spiritual well-being.



Spaces designed to
take you the highest
level of luxury.



WORLD-CLASS AMENITIES



INDOOR
SPORTS CLUB



LAVISH
CLUB HOUSE



HISPEED BRANDED
ELEVATORS



MULTIPURPOSE
HALL



WHEELCHAIR
ACCESSIBILITY



INTERNET
CONNECTIVITY



LANDSCAPE



RAIN WATER
HARVESTING



PRIVATE
TEMPLE



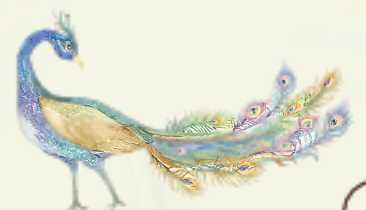
NATURE WALK
PATHWAY



YOGA MEDITATION
ZONE



EMERGENCY
SERVICES



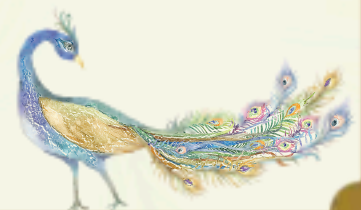
PAYMENT PLANS

CONSTRUCTION LINKED PLAN	
ON BOOKING	8%
WITHIN 30 DAYS	15%
ON START OF EXCAVATION	15%
ON GROUND FLOOR	5%
ON 5TH FLOOR	5%
ON 10TH FLOOR	10%
ON 15TH FLOOR	5%
ON SUPER STRUCTURE	10%
ON START OF TOWER FLOORING	10%
ON START OF EXTERNAL PAINT	10%
ON OFFER OF POSSESSION	7%

FLEXI PLAN	
BOOKING	8%
30 DAYS	30%
12 MONTHS	20%
STRUCTURE	20%
EXTERIOR PAINT	15%
ON OFFER OF POSSESSION	7%
DOWN PAYMENT PLAN	
BOOKING	8%
30 DAYS	85%
ON OFFER OF POSSESSION	7%

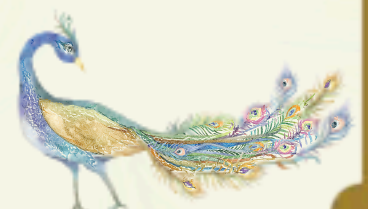
EXTRA CHARGES

- COVERED CAR PARKING: ₹2,50,000
- ELECTRIC LINE, DG SET & EDC: ₹150 / SQ. FT.
- IFMS: ₹25 / SQ. FT.
- SINKING FUND: ₹20 / SQ. FT.
- CLUB MEMBERSHIP: ₹100 / SQ. FT.



CONFIGURATION

TYPE	SIZE
STUDIO	450 SQ. FT.
1 BHK	750 SQ. FT.
2 BHK	1200 SQ. FT.
3 BHK	1500 SQ. FT.
4 BHK	2200 SQ. FT.



CONNECTIVITY

3 KM
Prem Mandir

3 KM
Iskcon Temple

5 KM
GLA University

0 KM
Garud Govind Mandir

2.5 KM
Maata Vaishno Devi &
Priya Kant Ju/Lotus Temple

6 KM
Bankey Bihari Mandir

0 KM
Chandrodaya Mandir

10 KM
KD Medical College

0 KM
Keshav Madhav Hospital



RAMTAL CHOWK, VRINDAVAN

BHOOMI
GATEWAY

ADDRESS : BHOOMI GATEWAY RAMTAL CHOWK VRINDAVAN U.P

FOR BOOKING AND SITE VISIT

CONTACT :-

+91 7900794545

amairagroupvrindavan@gmail.com

+91 7900793535

www.amairagroupvrindavan.com

